

Visibility Into Stability

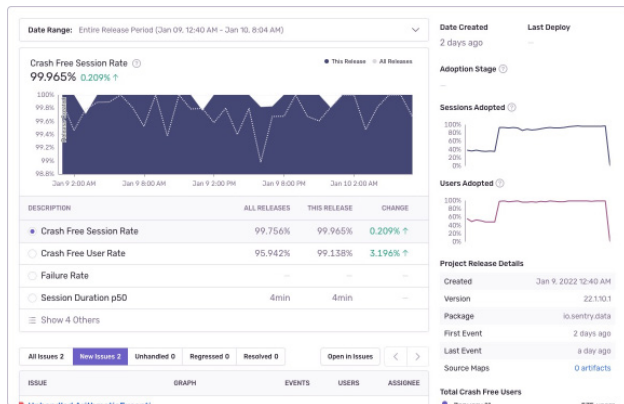
Release Health by Sentry

Customers expect an excellent product experience. However, when 70% of outages are caused by code changes made in production, how are you quickly and accurately detecting issues so you can roll back changes or stop progressive rollouts before they affect your customers?

Release Health allows you to take action faster and ship with confidence with a real-time view into stability and adoption across releases.

See version adoption, degradation, and impacted users

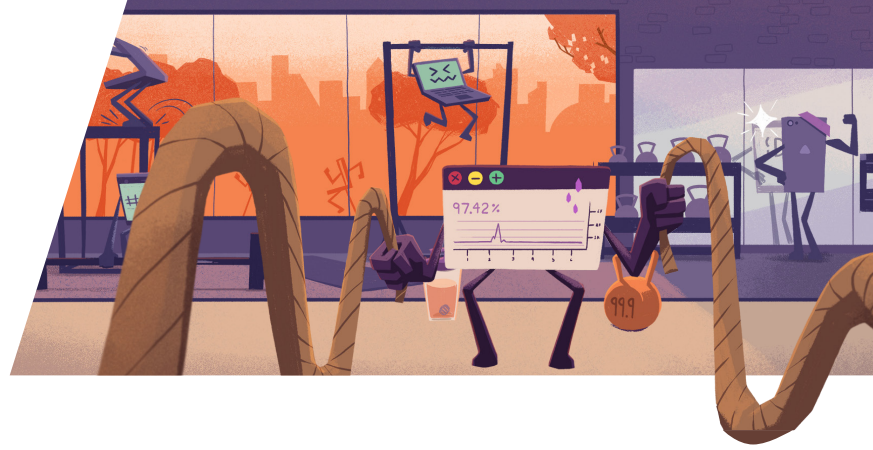
See core metrics like crash-free users, crash-free sessions, version adoption, and failure rate so you can quickly detect bad releases, prioritize the issues to solve across versions, and track when a release is ready to roll out to a wider audience.



Compare release stability and adoption across versions

With a view into all releases, you can compare active or past releases to understand trends and learn how your team maintains release quality and version adoption over time. Or you can dive in deeper and filter by issues, version or build number, events, transactions, and sessions to answer questions like "What's the crash rate of releases > 12.2.4" or "What are new issues on 11.* versions".

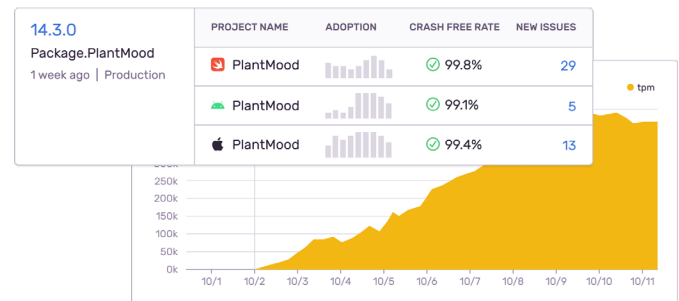
Contact sales@sentry.io or visit sentry.io/demo/ to get started with Sentry today.



"Sentry helps our team fix the most important issues in each release. We can track how a release is trending by percent of crash-free sessions. With this data, we can remediate issues that impact the most users and move on to building more features."

Jaylum Chen

Staff Software Engineer, Eventbrite



Take action on issues, crashes, and slowdowns quickly

React to problematic releases faster by identifying exactly where and how often an issue or crash occurs, investigating slowdowns, and seeing who pushed which commit. If there's a critical issue on your next release, you can see the code path that caused the error and revert the commit before it turns into a major outage.

